



**Wednesday, April 2, 2008, 8:15 A.M. ET**

Nonfarm private employment increased 8,000 from February to March 2008 on a seasonally adjusted basis, according to the *ADP National Employment Report*<sup>TM</sup>. The estimated change in employment from January to February was revised up 5,000 to negative 18,000. Though positive, the slight increase of 8,000 in March signals a continuing sharp deceleration of employment growth from previous levels.

Unlike the weakness of employment reported in February, which was widespread across businesses of all sizes and apparent in all major sectors of the economy, the weakness of employment in March was concentrated among larger businesses in the goods-producing sector.

Employment in the service-providing sector of the economy grew 85,000, while employment in the goods-producing sector declined 77,000, the sixteenth consecutive monthly decline. Manufacturing employment fell 58,000 in March and marked the nineteenth consecutive monthly decline.

Large businesses, defined as those with 500 or more workers, saw employment decline 52,000. Conversely, employment among small-size businesses, defined as those with fewer than 50 workers, advanced 55,000 during the month, up from a revised 16,000 in February. Employment increased just 5,000 among medium-size businesses with between 50 and 499 workers.

Two sectors of the economy hit hardest by recent problems in mortgage markets have been residential construction and financial activities related to home sales and mortgage lending. In March, construction employment fell 22,000. This is the sixteenth consecutive monthly decline, bringing the total decline in construction jobs since the peak in August 2006 to 259,000. Employment in financial activities for the month was flat.

For information on the construction and use of the *ADP Report*, please visit the methodology section of the *ADP National Employment Report* website at <http://ADPEmploymentreport.com/methodology.aspx>.



## National Employment Report

### DERIVED FROM ADP PAYROLL DATA

**Table 1. Employees on nonfarm private payrolls by selected industry sector and size**  
(In thousands)

Industry / Size of Payroll	Seasonally Adjusted						Change from: Feb. 2008 - Mar. 2008p
	Oct. 2007	Nov. 2007	Dec. 2007	Jan. 2008	Feb. 2008	Mar. 2008p	
<b>Total nonfarm private</b> .....	115,725	115,910	115,952	116,071	116,053	116,061	8
Small (1-49).....	50,879	50,954	51,023	51,087	51,103	51,158	55
Medium (50-499).....	45,478	45,552	45,558	45,605	45,603	45,608	5
Large (> 499).....	19,368	19,404	19,371	19,379	19,347	19,295	-52
<b>Goods-producing</b> .....	22,117	22,110	22,077	22,064	21,993	21,916	-77
Small (1-49).....	8,024	8,024	8,024	8,020	7,999	7,991	-8
Medium (50-499).....	9,763	9,756	9,725	9,716	9,688	9,663	-25
Large (> 499).....	4,330	4,330	4,328	4,328	4,306	4,262	-44
<b>Service-providing</b> .....	93,608	93,800	93,875	94,007	94,060	94,145	85
Small (1-49).....	42,855	42,930	42,999	43,067	43,104	43,167	63
Medium (50-499).....	35,715	35,796	35,833	35,889	35,915	35,945	30
Large (> 499).....	15,038	15,074	15,043	15,051	15,041	15,033	-8
<b>Addendum:</b>							
Manufacturing.....	13,812	13,808	13,792	13,789	13,748	13,690	-58

p = preliminary

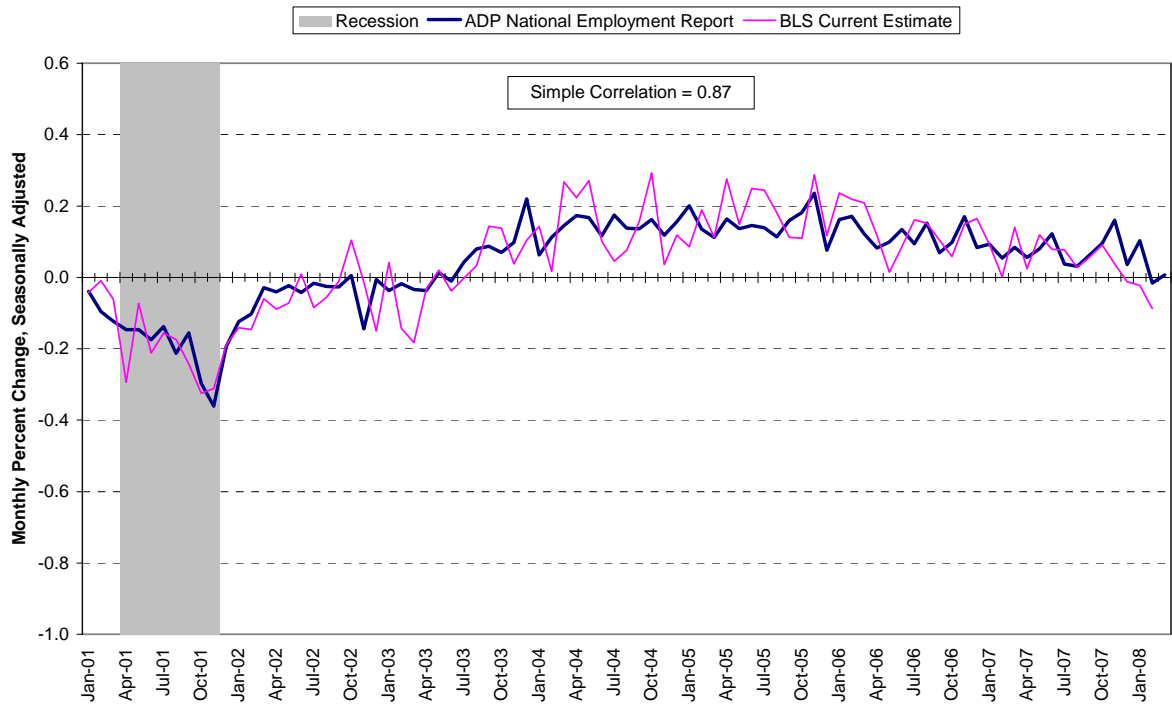
The matched sample used to develop the *ADP National Employment Report* was derived from ADP data which, during the last six months of 2007, averaged approximately 392,000 payrolls representing nearly 24 million U.S. employees. This approximately represents the size of the matched sample used this month.

For information on the construction and use of the *ADP Report*, please visit the methodology section of the *ADP National Employment Report* website at <http://ADPEmploymentreport.com/methodology.aspx>



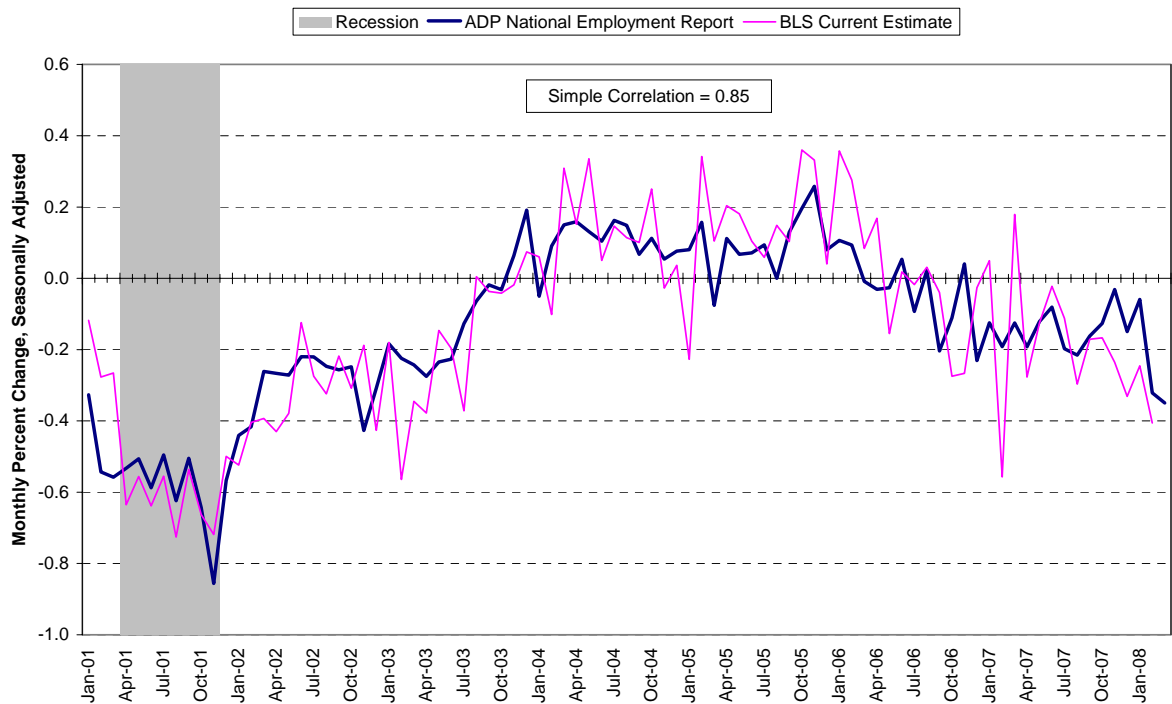
# National Employment Report

### Chart 1. Growth of Nonfarm Private Employment, All Industries



Source: Automatic Data Processing, Inc., Macroeconomic Advisers, LLC., Bureau of Labor Statistics

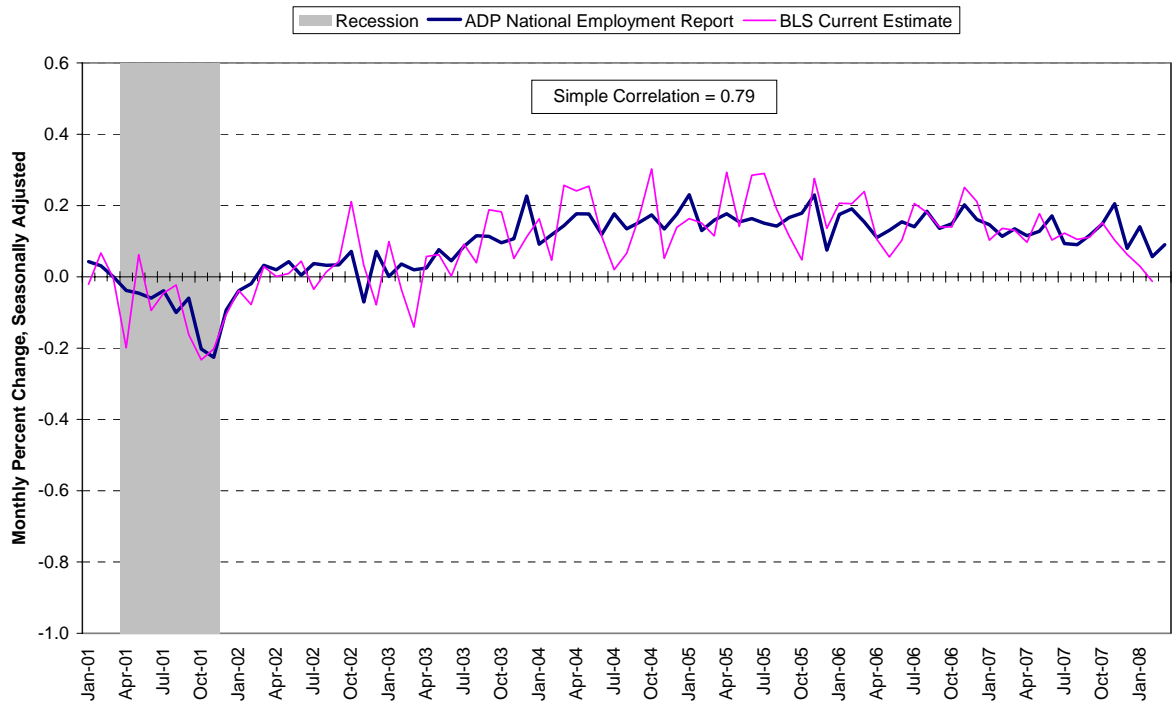
### Chart 2. Growth of Nonfarm Private Employment, Goods-Producing Industries



Source: Automatic Data Processing, Inc., Macroeconomic Advisers, LLC., Bureau of Labor Statistics

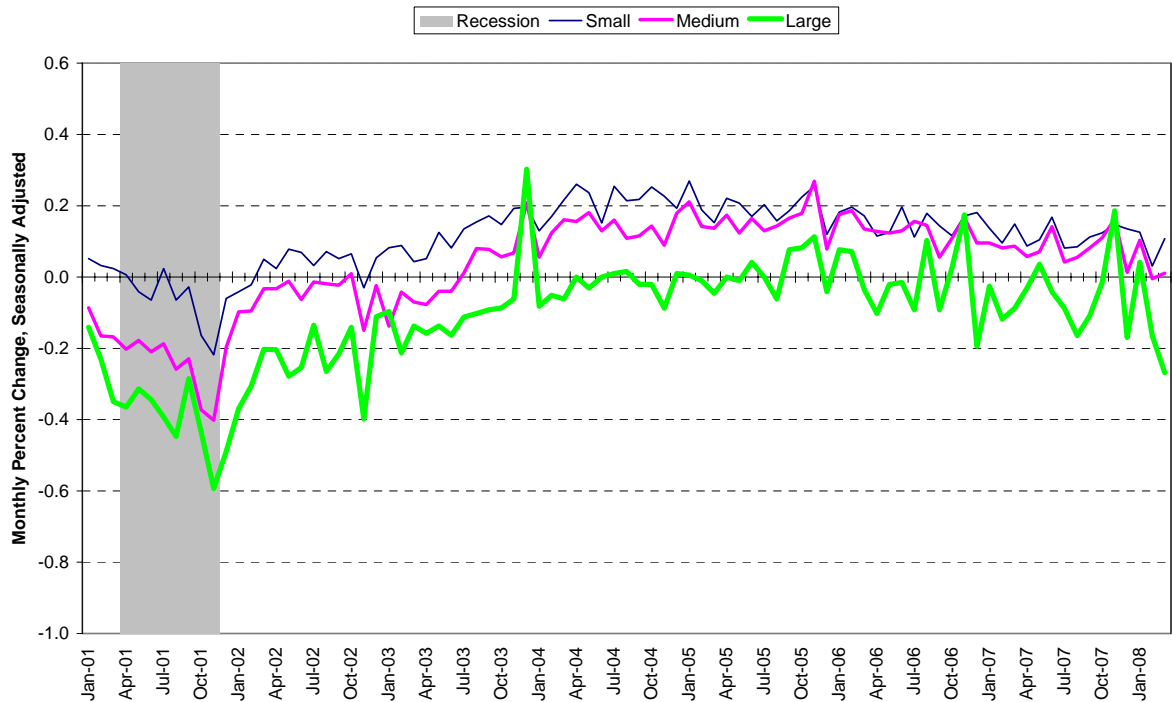


### Chart 3. Growth of Nonfarm Private Employment, Service-Providing Industries



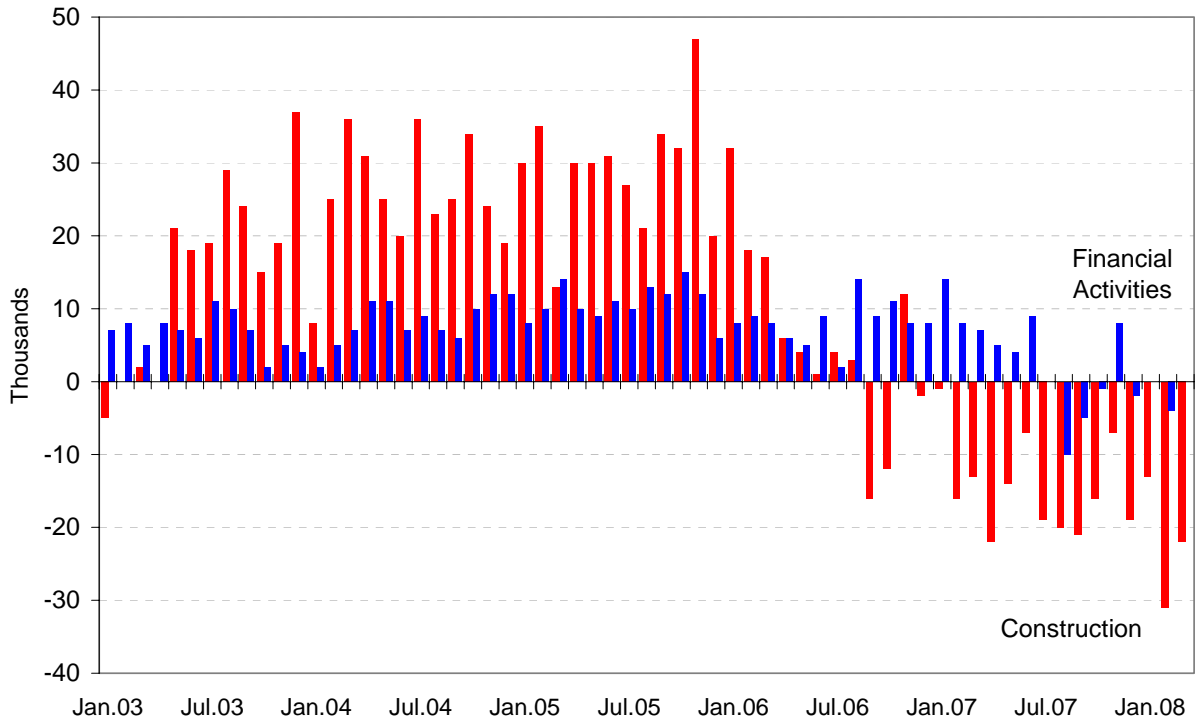
Source: Automatic Data Processing, Inc., Macroeconomic Advisers, LLC., Bureau of Labor Statistics

### Chart 4. Growth of Nonfarm Private Employment, by Size of Payroll



Source: Automatic Data Processing, Inc., Macroeconomic Advisers, LLC.

Chart 5. Monthly Changes of Employment in Construction and Financial Activities



Source: Automatic Data Processing, Inc., Macroeconomic Advisers, LLC

### About the ADP National Employment Report <sup>SM</sup>

The *ADP National Employment Report*, sponsored by ADP<sup>®</sup>, was developed and is maintained by Macroeconomic Advisers, LLC. It is a measure of employment derived from an anonymous subset of roughly 500,000 U.S. business clients. During the last six months of 2007, this subset represented approximately 392,000 U.S. business clients representing nearly 24 million U.S. employees working in all private industrial sectors. The data is collected for pay periods that can be interpolated to include the week of the 12<sup>th</sup> of each month, and processed with statistical methodologies similar to those used by the U.S. Bureau of Labor Statistics to compute employment from its monthly survey of establishments. Due to this processing, this subset is modified to make it indicative of national employment levels; therefore, the resulting employment changes computed for the *ADP National Employment Report* are not representative of changes in ADP's total base of U.S. business clients.

Empirical analysis performed by Macroeconomic Advisers suggests that the *ADP National Employment Report* can be used to develop a forecast of “true” employment that is superior to those resulting from consensus estimates, survey data, or other models of employment that do not incorporate the results of the *ADP Report*.

For a description of the underlying data and the statistical properties of the series, please see “*ADP National Employment Report: Development Methodology*” at <http://ADPEmploymentreport.com/methodology.aspx>.



For a full schedule of future releases, please visit: [www.ADPemploymentreport.com](http://www.ADPemploymentreport.com)

Media contacts: ADP Public Relations: 973-974-7612

Macroeconomic Advisers: 314-721-4747

Technical information: 314-721-4747

[www.ADPemploymentreport.com](http://www.ADPemploymentreport.com)

*The ADP National Employment Report is a trademark and service mark of ADP of North America, Inc.*